

Tips & Tricks

A step by step guide to boost your BI skills

• TIP 1

How to Update/Add Python and/or R Environments

• TIP 2

How to Update/Add Python and/or R Packages

• TIP 3

How to Recover Model Definition File

TIP 1

How to Update/Add Python and/or R Environments

*Admin Rights Required

There sometimes comes the need to have multiple python environments. You may need:

- the latest and greatest version of packages
- to collaborate with a colleague in their own environment/Pyramid install
- you are delivering an application to a client and want to ensure that everything work's perfectly in their environment
- or that you may need other Python applications that only work with certain versions of Python

To aid/help with these scenarios, you can add a new Python environment in Pyramid, apart from what came with the original install. To do so, you must have admin rights on the platform.

- 1 Go to Admin Console > AI and ML > ML Environments



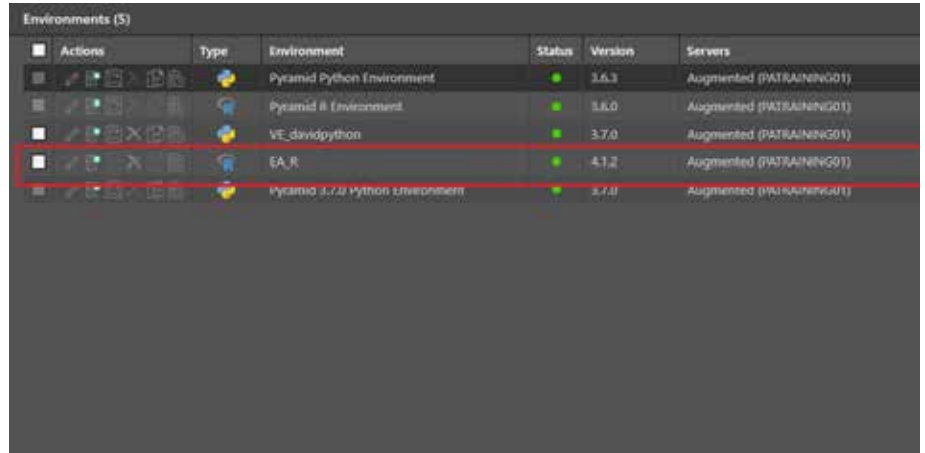
2 Click on Add Environment.



3 Fill out environment details in the wizard, most importantly, the version you want to add. Click Apply.



4 Once environment is added, it will process, and once it's green, it means it's ready for use.



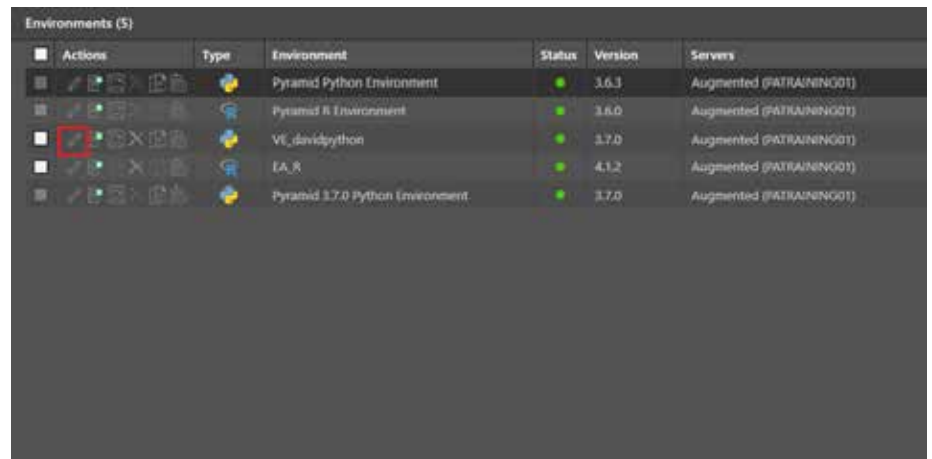
TIP 2

How to Update/Add Python and/or R Packages

*Admin Rights Required

Packages used within environments need updating depending on the different types of functionality an end user wants to be able to access. To update packages, follow these steps.

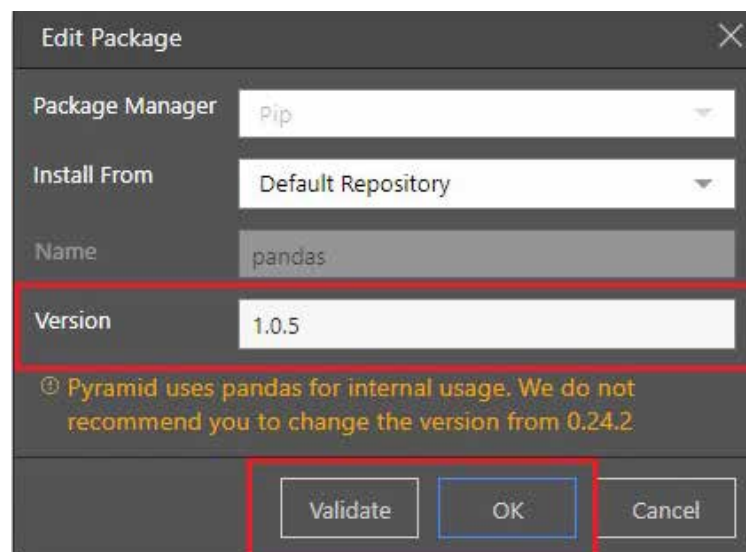
- 1 Select the environment you want to edit in the list, and click on edit.



- 2 In edit screen, click on the Packages tab, select the package that needs to be updated and click on edit.



- 3 In edit package screen, type in the version you want to update. Validate to make sure it is the right version, and click on OK, and the package will then get updated.



- Click on save, and it then updates the environment. Once the status is green, it's ready for use with the updated package.

Actions	Type	Environment	Status	Version	Servers
		Pyramid Python Environment	●	3.6.3	Augmented (PATRAINING01)
		Pyramid R Environment	●	3.6.0	Augmented (PATRAINING01)
		VE_davidpython	●	3.7.0	Augmented (PATRAINING01)
		EA_R	●	4.1.2	Augmented (PATRAINING01)
		Pyramid 3.7.0 Python Environment	●	3.7.0	Augmented (PATRAINING01)

TIP 3

How to Recover Model Definition File

*Admin Rights Required

- Go to Admin Console > Data > Source Manager

